



thewashingtonballet

2010.2011 SEASON SUBSCRIBE TODAY + SAVE!

UNTAMED

MORGANN FREDERICK

DEAR FRIENDS

The Washington Ballet: *Untamed*. Our **2010.2011 Season** theme accurately describes the passionate works we'll present, and the raw talent of our remarkable company of artists. We're proud to offer you dynamic adaptations of beloved classical works and exhilarating contemporary programs that you simply won't see anywhere else.

We kick off 2010.2011 at The Kennedy Center with a riveting staging of **Romeo + Juliet**, set to Prokofiev's haunting score. Then join us in February when we bring down the house with **Rock & Roll**, an innovative program that pairs iconic music with adventuresome dancing at the Harman Center. In April we return to the Kennedy Center to present ballet favorite, **Le Corsaire**. You won't want to miss seeing our dancers breathe new life into this thrilling tale of pashas and pirates. We conclude our season with my adaptation of **Carmen**. This vibrant story is paired with world premieres by TWB's Associate Artistic Director David Palmer and gifted choreographer Edwaard Liang, whose **Wunderland** was an audience favorite last season.

Our 2010.2011 Family Series also features a captivating **Sleeping Beauty (suite)** by our Studio Company and a specially-designed interactive program, **Rock & Roll: Kids!** Of course we'll also present **The Nutcracker**. I'm proud to say TWB's patriotic take on this classic has become **DC's own Nutcracker**, so much so, that we've extended its run to four weeks! Cherry blossom trees, Anacostia Indians, and the two Georges make for a festive holiday treat for everyone.

Be a part of our inspiring upcoming season and subscribe now. We promise you enriching, and unique dance experiences to look forward to at the best prices available. **Don't miss your chance to see The Washington Ballet as you never have before...*Untamed*.**

I look forward to seeing you in the audience!

Sincerely,



Septime Webre, Artistic Director



LEFT TO RIGHT, TOP TO BOTTOM: JARED NELSON, SONIA KHARATIAN, TAMAS KRIZSA, SARAH WALBORN, ANDILE NDLOVU, RUI HUANG, JONATHAN JORDAN, MAKI ONUKI, ZACHARY HACKSTOCK, JADE PAVETTE, AMANDA COBB, COREY LANDOLT, MORGANN FREDERICK, DYLAN WARD, LUIS R. TORRES, DIANA ALBRECHT, BROOKLYN WACK, MAKI ONUKI, ELIZABETH GAITHER & SONIA KHARATIAN

FOUR SERIES ROMEO + JULIET

The Kennedy Center
Eisenhower Theater
November 3-7, 2010

ROCK & ROLL

The Harman Center
Sidney Harman Hall
February 16-20, 2011

LE CORSAIRE

The Kennedy Center
Eisenhower Theater
April 6-10, 2011

CARMEN

The Harman Center
Sidney Harman Hall
May 18-22, 2011

*Add on The Nutcracker and save 10%.

UNTAMED
UNCUT
UNLIMITED
SUBSCRIBE NOW
FOR THE BEST SEATS
AT THE BEST PRICES

FAMILY SERIES NUTCRACKER

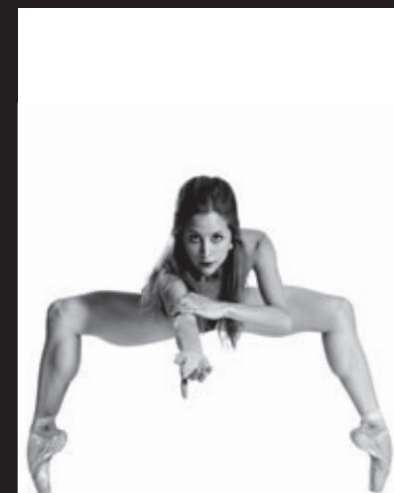
Warner Theatre
December 2-26, 2010

ROCK & ROLL: KIDS!

The Harman Center
Sidney Harman Hall
February 20, 2011

SLEEPING BEAUTY (SUITE)

TWB's Theater at THEARC
April 16 & 17, 2011



LEFT TO RIGHT, TOP TO BOTTOM: JARED NELSON, SONA KHARATIAN, TAMAS KRIZSA, SARAH WALEBORN, ANDILE NDOU, RUI HUANG, JONATHAN JORDAN, MAKI ONUKI, ZACHARY HAGSTOCK, JADE PIVETTE, AMANDA COBB, COREY LANDOLT, MORGANN FREDERICK, DYLAN WARD, LUIS R. TORRES, DIANA ALBRECHT, BROOKLYN MACK, MAKI ONUKI, ELIZABETH GAITHER & SONA KHARATIAN

FOUR SERIES
ROMEO + JULIET
The Kennedy Center
Eisenhower Theater
November 3-7, 2010

ROCK & ROLL
The Harman Center
Sidney Harman Hall
February 16-20, 2011

LE CORSAIRE
The Kennedy Center
Eisenhower Theater
April 6-10, 2011

CARMEN
The Harman Center
Sidney Harman Hall
May 18-22, 2011

*Add on The Nutcracker and save 10%.

UNTAMED UNCUT UNLIMITED

SUBSCRIBE NOW
FOR THE BEST SEATS
AT THE BEST PRICES

FAMILY SERIES
NUTCRACKER
Warner Theatre
December 2-26, 2010

ROCK & ROLL: KIDS!
The Harman Center
Sidney Harman Hall
February 20, 2011

SLEEPING BEAUTY (SUITE)
TWB's Theater at THEARC
April 16 & 17, 2011

SUBSCRIBE TODAY AND SAVE! WASHINGTONBALLET.ORG 202.362.3606 X605

NOVEMBER 3-7, 2010
The John F. Kennedy Center
for the Performing Arts
Eisenhower Theater

Wednesday, November 3, 8 PM (Preview)
Thursday, November 4, 8 PM (Opening)
Friday, November 5, 8 PM
Saturday, November 6, 2:30 PM & 8 PM
Sunday, November 7, 1 PM & 5:30 PM

ROMEO+JULIET

The artists of The Washington Ballet explore the power of love and fate in the romantic and tragic Shakespearian classic, *Romeo and Juliet*. Septime Webre's adaptation of the star-crossed lovers' tale bursts with unbridled passion and virtuosic dancing. Set to Sergei Prokofiev's stunning score, this gripping production is not to be missed!

ELIZABETH GAITHER & JARED NELSON



SUBSCRIBE TODAY AND SAVE! WASHINGTONBALLET.ORG 202.362.3606 X605



JONATHAN JORDAN

FEBRUARY 16-20, 2011

**Harman Center for the Arts
Sidney Harman Hall**

Wednesday, February 16, 8 PM (Preview)

Thursday, February 17, 8 PM (Opening)

Friday, February 18, 8 PM

Saturday, February 19, 2:30 PM & 8 PM

Sunday, February 20, 1 PM & 5:30 PM*

*Special Family Series performance! Please see the Family Series page for more details.

ROCK & ROLL

TWB rocks into 2011 with this triple-threat, triple-bill at Sidney Harman Hall. Featuring celebrated British choreographer Christopher Bruce's energetic and athletic *Rooster*, set to the music of the Rolling Stones; Trey McIntyre's gripping *High Lonesome*, set to the music of Beck; and a world premiere by TWB's ever-innovative Artistic Director Septime Webre, *Rock & Roll* celebrates the heart and soul of the company's artists and a musical genre that continues to electrify the nation.

SUBSCRIBE TODAY AND SAVE! WASHINGTONBALLET.ORG 202.362.3606 X605



APRIL 6-10, 2011

**The John F. Kennedy Center
for the Performing Arts
*Eisenhower Theater***

Wednesday, April 6, 8 PM (Preview)

Thursday, April 7, 8 PM (Opening)

Friday, April 8, 8 PM

Saturday, April 9, 2:30 PM & 8 PM

Sunday, April 10, 1 PM & 5:30 PM

LE CORSAIRE

Sail the high seas with The Washington Ballet in this swashbuckling adventure of pirates, pashas and the slave girls who love them in this thrilling new production of the 19th century classic by Marius Petipa, based on a poem by Lord Byron. The story of lovers Conrad and Medora, the evil Seid Pasha, and a company of corsairs enchants and excites. Don't miss this adventuresome company premiere!

CARMEN

MAY 18-22, 2011

**Harman Center for the Arts
Sidney Harman Hall**

Wednesday, May 18, 8 PM (Preview)

Thursday, May 19, 8 PM (Opening)

Friday, May 20, 8 PM

Saturday, May 21, 2:30 PM & 8 PM

Sunday, May 22, 1 PM & 5:30 PM

Carmen, Septime Webre's smoldering adaptation of the tale of this feisty temptress, closes TWB's 2010.2011 season. Set to Georges Bizet's spirited score, this production features Picasso-inspired sets and choreography influenced by the bold movements of Spanish matadors. The program also includes riveting world premieres by TWB Associate Artistic Director David Palmer and Edwaard Liang, whose *Wunderland* captivated DC audiences.

SONA KHARATIAN

SUBSCRIBE TODAY AND SAVE! WASHINGTONBALLET.ORG 202.362.3606 X605



DECEMBER 2-26, 2010

Warner Theatre

**ADD ONE OF THESE PERFORMANCES
ON TO YOUR FOUR SERIES PACKAGE:**

Thursday, December 2, 7 PM
Friday, December 3, 7 PM (Opening)
Saturday, December 4, 2 PM & 7 PM
Sunday, December 5, 1 PM
Thursday, December 9, 7 PM
Friday, December 10, 7PM

FAMILY SERIES:

Saturday, December 4, 2 PM
Sunday, December 5, 1PM

SEPTIME WEBRE'S
THE NUTCRACKER

Holiday merriment and historical nostalgia intersect in the vibrant world of Septime Webre's *The Nutcracker*, now running four weeks! Starring George Washington as the heroic Nutcracker and England's King George III as the evil Rat King, this whimsical delight is a quintessential Washington, DC holiday tradition. Secure your seats now to experience TWB's *Nutcracker*, complete with "special charms and local flavor!" (The Washington Post)



SUBSCRIBE TODAY AND SAVE! WASHINGTONBALLET.ORG 202.362.3606 X605

10.11 FAMILY SERIES

The Washington Ballet's Family Series is specially designed to provide audiences of all ages with a variety of engaging and entertaining performance throughout the season. Join us in 2010.2011 for these Family Series productions:



THE NUTCRACKER

DECEMBER 2-26, 2010
Warner Theatre

FAMILY SERIES:

Saturday, December 4, 2 PM
Sunday, December 5, 1 PM

Septime Webre's patriotic take on this classic ballet is fun for audiences of all ages. Plan your family's Nutcracker experience today!

ROCK & ROLL: KIDS!

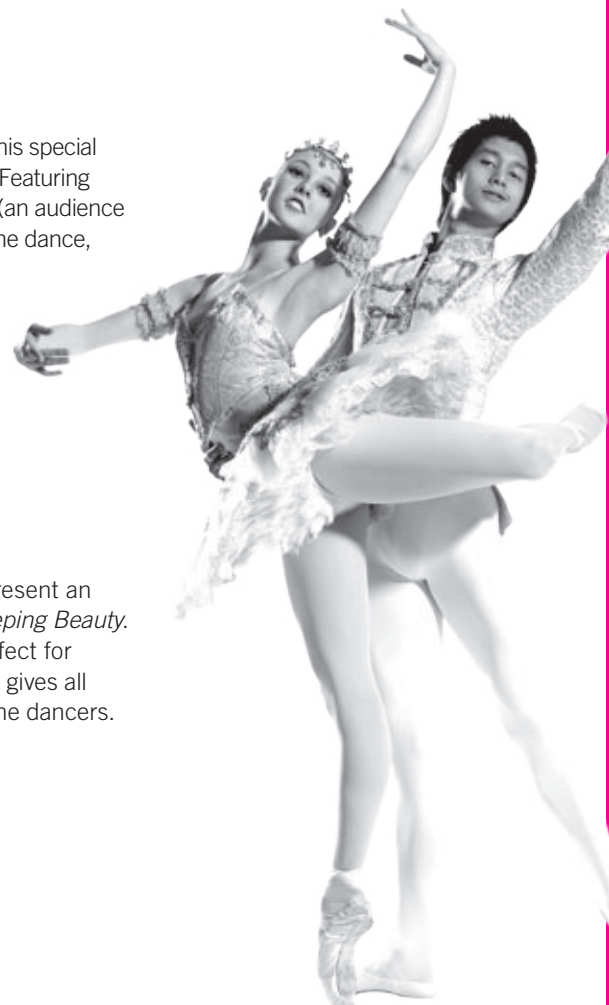
SUNDAY, FEBRUARY 20, 2011, 5:30 PM
The Harman Center
Sidney Harman Hall

Join Septime Webre and Company dancers for this special kid-friendly version of TWB's *Rock & Roll* ballet. Featuring upbeat music and Mr. Webre's "Make-a-Ballet" (an audience favorite), this program invites children to join in the dance, and is fun for the whole family!

SLEEPING BEAUTY (SUITE)

APRIL 16 & 17, 2011
The Washington Ballet's Theater at THEARC
Saturday, April 16, 1 PM
Saturday, April 16, 5:30 PM
Sunday, April 17, 2 PM

The rising stars of TWB's Studio Company present an elegant rendition of the classic ballet, *The Sleeping Beauty*. This hour-long family-friendly program is perfect for balletomanes and ballet newcomers alike, and gives all audiences an up-close-and-personal view of the dancers.



SARAH WALBORN & JONG-SUK PARK

PHOTOS STEVE VACCARIELLO CREATIVE DESIGN ARMY

MORE BANG FOR YOUR BUCK

ENHANCE YOUR SUBSCRIPTION PACKAGE WITH THESE AFFORDABLE ADD-ONS

10.11 INTHEWINGS WITH SEPTIME WEBRE

Throughout the season, The Washington Ballet's Artistic Director and company artists host these illuminating and intriguing lecture/demonstrations in the intimate England Studio Theater. Subscribers can mix and match them to customize their series or come to them all for only \$60!

#1: BARDANDBALLET

Monday, October 18, 2010, 6:30 PM

Discover the process of turning the great works of Shakespeare into moving ballets including TWB's 2010.2011 Season opener, *Romeo + Juliet*.

#2: ROCK, ROLL AND BALLET

Monday, January 31, 2011, 6:30 PM

An engaging experience for dance and music lovers alike, this *inthewings* focuses on the intrinsic connection between these two art forms.

#3: INSIDE A WORLD PREMIERE

Monday, May 2, 2011, 6:30 PM

Artistic Director Septime Webre leads this fascinating dialogue on the challenges and opportunities TWB faces in mounting world premieres, including those on TWB's season closer, *Carmen*.



AYANO KIMURA

SUBSCRIBER BENEFITS

AS A WASHINGTON BALET SUBSCRIBER, YOU RECEIVE THESE EXCLUSIVE BENEFITS:

AMAZING SAVINGS

TWB subscribers receive deep discounts off box-office prices (up to 25%), plus an additional 10% off single tickets to *The Nutcracker* and other productions when purchased with their subscriptions.

EASY EXCHANGES

TWB subscribers are free to exchange into various performances of the same production at no charge or into other productions for only \$10. Please also note that subscribers are responsible for the price difference if the new tickets are more expensive.

SEATING PRIORITY

TWB subscribers can purchase the best seats before single tickets go on sale.

SPECIAL ACCOMMODATIONS

TWB subscribers have the option to include any special seating requests when renewing their subscription(s).

EXCLUSIVE INVITATIONS

TWB subscribers get rare access to in-studio rehearsal and fun events including our Open House and more!

RESTAURANT DEALS

TWB subscribers enjoy discounts at wonderful restaurants including The Jockey Club, 600 Watergate, Notti Bianche, and more!

SUBSCRIBE NOW AND SAVE!

CHOOSE YOUR SERIES. TO THE RIGHT OF IT ARE THE DATES YOU WILL ATTEND EACH BALLET.

OPTION 1 FOUR SERIES PACKAGES

| Series | Romeo + Juliet | Rock & Roll | Le Corsaire | Carmen |
|------------------|------------------------|-------------------------|------------------------|------------------------|
| Preview Night | Wed, Nov. 3 8 PM | Wed, Feb. 16 8 PM | Wed, Apr. 6 8 PM | Wed, May 18 8 PM |
| Opening Night | Thurs, Nov. 4 8 PM | Thurs, Feb. 17 8 PM | Thurs, Apr. 7 8 PM | Thurs, May 19 8 PM |
| Friday Evening | Fri, Nov. 5 8 PM | Fri, Feb. 18 8 PM | Fri, Apr. 8 8 PM | Fri, May 20 8 PM |
| Saturday Matinee | Sat, Nov. 6 2:30 PM | Sat, Feb. 19 2:30 PM | Sat, Apr. 9 2:30 PM | Sat, May 21 2:30 PM |
| Saturday Evening | Sat, Nov. 6 8 PM | Sat, Feb. 19 8 PM | Sat, Apr. 9 8 PM | Sat, May 21 8 PM |
| Sunday Matinee | Sun, Nov. 7 1 PM | Sun, Feb. 20 1 PM | Sun, Apr. 10 1 PM | Sun, May 22 1 PM |

OPTION 2 FAMILY SERIES PACKAGES

| Series | The Nutcracker | Rock & Roll: Kids! | Sleeping Beauty (suite) |
|----------|-------------------|-----------------------|-------------------------|
| Saturday | Sat, Dec. 4, 2 PM | Sun, Feb. 20, 5:30 PM | Sat, April 16, 1 PM |
| Sunday | Sun, Dec. 5, 1 PM | Sun, Feb. 20, 5:30 PM | Sun, April 17, 2 PM |

SERIES PRICES

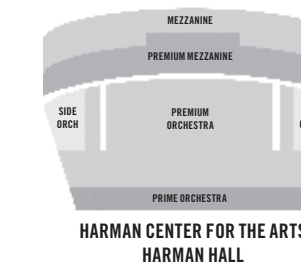
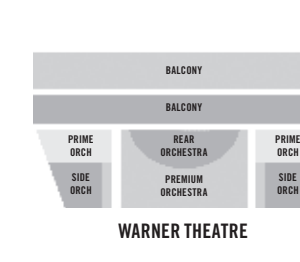
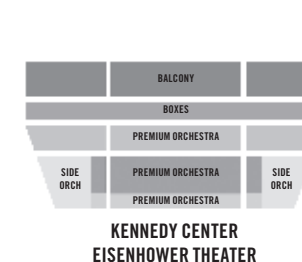
| Section | Standard Price | Preview Price | Family Price |
|-----------------------------------|----------------|---------------|--------------|
| Box Tier/ Premium Mezzanine | \$318 | \$213 | N/A |
| Premium Orchestra/ Mezzanine | \$261 | \$186 | \$201.50 |
| Balcony/Mezzanine | \$261 | \$186 | \$201.50 |
| Prime Orchestra | \$159 | \$123 | \$140 |
| Side Orchestra/ Side Mezzanine | \$87 | \$60 | \$97 |

PRICES FOR ADDITIONAL SINGLE TICKETS AND ADD-ON OPPORTUNITIES

| Performance | Box Tier/ Prem. Mezzanine | Prem. Orchestra/ Mezzanine | Balcony/ Mezzanine | Prime Orchestra | Side Orchestra/ Side Mezzanine |
|---|------------------------------|-------------------------------|-----------------------|--------------------|-----------------------------------|
| The Nutcracker | n/a | \$78.25 | \$78.25 | \$47.50 | \$26 |
| Standard: Kennedy Center & Harman Center Prod. | \$112.50 | \$78.25 | \$78.25 | \$47.50 | \$26 |
| Preview Night: Kennedy Center & Harman Center Prod. | \$72 | \$55.75 | \$55.75 | \$36.75 | \$18 |
| The Sleeping Beauty (suite) | Orchestra—\$45 | | | | |

inthewings

| | | |
|---|-----------------------------|------|
| bardandballet | Mon, Oct. 18, 2010, 6:30 PM | \$25 |
| Rock, Roll & Ballet | Mon, Jan. 31, 2011, 6:30 PM | \$25 |
| Inside a World Premiere | Mon, May 2, 2011, 6:30 PM | \$25 |
| Choose a package of all three (see above) | | \$60 |



STEP 1 COMPLETE THE FOLLOWING INFORMATION

NAME _____
EMAIL _____
ADDRESS _____
CITY _____ STATE _____ ZIP _____
DAY PHONE _____ EVENING PHONE _____



COREY LANDOLT

STEP 2 SELECT YOUR SERIES: Option 1—Four Series Option 2—Family Series

Select section: Box Tier/Premium Mezzanine (Four Series Only) Premium Orchestra/Mezzanine
 Balcony/Mezzanine Prime Orchestra Side Orchestra/Side Mezzanine
Select alternate: Box Tier/Premium Mezzanine (Four Series Only) Premium Orchestra/Mezzanine
 Balcony/Mezzanine Prime Orchestra Side Orchestra/Side Mezzanine

| DAY/TIME | PRICE PER PACKAGE | # OF SEATS | =TOTAL |
|----------|-------------------|------------|--------|
| | | | |

Notes about my seating request:

Please include any special seating requests with your order. We will make every effort to meet your requests, but please note we cannot guarantee we will be able to do so.

I need wheelchair accessible seating.

STEP 3 ADD ON ADDITIONAL SINGLE TICKETS of your series' productions in addition to fast selling favorites including *The Nutcracker*, *Sleeping Beauty (suite)* and *inthewings* with Septime Webre.

| PRODUCTION | PERFORMANCE DATE/TIME | SECTION | ALTERNATE SECTION | # OF SEATS | PRICE | SUBTOTAL |
|------------|--------------------------|---------|----------------------|------------|-------|----------|
| | | | | | | |

STEP 4 PAYMENT

Visa Discover Mastercard Amex Check

| CARD NUMBER | EXP DATE | SECURITY CODE |
|-------------|----------|---------------|
| | | |

SIGNATURE

| | | |
|---------------------|---|----------|
| STEP 5 TOTAL | TOTALS FROM STEPS 2 AND 3 | \$ _____ |
| | TICKET SALES ONLY COVER A PORTION OF OUR COSTS. ADD ON A GIFT HERE! | \$ _____ |
| | HANDLING FEE | \$ 15.00 |
| | GRAND TOTAL | \$ _____ |

STEP 6 SEND COMPLETED FORM WITH FULL PAYMENT TO:

The Washington Ballet
Attn: Subscriptions
3515 Wisconsin Avenue, NW Washington, DC 20016
FAX 202.362.1311 PHONE 202.362.3606 x605 ONLINE WASHINGTONBALLET.ORG

SUBSCRIBE TODAY AND SAVE! WASHINGTONBALLET.ORG 202.362.3606 X605

EXTRA SUBSCRIBER BENEFITS FROM TWB'S PARTNERS

In ballet, a “pas de deux” is literally “a dance for two.” It requires great alignment and synergy, and symbolizes a connection of purpose and a desire to create works of tremendous beauty. The Washington Ballet celebrates three exclusive partnerships that not only make our work possible but provide subscribers with added benefits.

AMERICAN AIRLINES SOMETHING SPECIAL IN THE AIR – TWB'S DANCERS!

American Airlines is the official airline of The Washington Ballet, and that partnership carries some of TWB's most important assets—its dancers. Through a special arrangement with AA, members of TWB's professional company who hail from outside of the United States fly home for free once a year on American Airlines. You can join AA in helping support TWB's artists. Every time you travel on American Airlines, American Eagle or AmericanConnection carriers, TWB earns Business ExtrAA points, which allows TWB to fly its dancers home and brings guests artists to Washington, DC. Whether you book online or through a travel agent, please provide TWB's Business ExtrAA number (799753) in the space indicated on line or give it to your travel agent. TWB earns points, and you continue to earn your AAdvantage miles.

American introduces a new daily nonstop service to Beijing using its widebody Boeing 777 aircraft, which feature three classes of service, accommodating 14 First Class passengers, 37 Business Class passengers, and 194 Economy Class passengers. American flies company member Rui Huang home to China, and now you can enjoy a similar flight without multiple transfers.

THE FAIRFAX AT EMBASSY ROW TWB'S OFFICIAL HOTEL

TWB is proud to continue its exciting partnership with *The Fairfax* while offering our subscribers a special celebratory treat. The Jockey Club, the hotels' legendary restaurant, has put together a specially priced prix-fixe dinner menu, available for reservations between 5:30pm–6:30pm on performance evenings. The Ballet is grateful to *The Fairfax* for its generous gift of housing our artists and visiting guests!

RESULTS GYM TWB'S OFFICIAL GYM

TWB dancers need to stay in great shape to perform the demanding repertoire each season. For eight seasons, TWB dancers have met that requirement through a partnership with *Results Gym*. Dancers exercise at one of four Results locations, and now the gym is extending an offer to TWB subscribers to meet their fitness goals. Any TWB subscriber who brings proof of a four series package receives a \$50 discount off the base membership price. TWB is grateful to *Results Gym* for keeping our artists in tip-top shape.



KEEP US ON OUR TOES!

Ticket prices cover a fraction of the costs of bringing you the compelling and exciting ballet performances described in this brochure. Now more than ever, your tax-deductible contribution helps bring the joy and artistry of dance to the community through the highest quality ballet productions, cutting edge education and community engagement initiatives and internationally acclaimed training at The Washington School of Ballet.

THERE ARE SEVERAL WAYS YOU CAN GET INVOLVED:

- **BALLETOMANE SOCIETY** A balletomane refers to a self-motivated and self-taught devotee with a mania for ballet watching. At The Washington Ballet, a balletomane is the moniker for our major donor society. Members of the Balletomane Society enjoy exclusive benefits, bringing them closer to the creative process, including invitations to opening night parties, concierge service for tickets, exclusive studio and behind-the-scenes tours and more. Membership begins at \$1,500 with increasing levels bringing even greater benefits. For more information on becoming a Balletomane, please visit our website or contact Michael E. Hill, Director of External Relations, at mhill@washingtomballet.org.
- **BALLET CORPS** The “corps de ballet” literally means “the body of the ballet.” Donors to the Ballet Corps play an important role in ensuring that TWB and its parts—the professional company, the school and our community engagement activities—receive the support they need to thrive. Membership starts as low as \$100 and continues with increasing benefits to \$1,499. Whether you can make a big or small gift, this unrestricted support ensures that the corps of The Washington Ballet succeeds. For more information on becoming a member of our Ballet Corps, please visit our website or contact Steven Kirkpatrick, Manager of Development Operations, at skirkpatrick@washingtomballet.org.
- **SPONSORSHIPS** Sponsorship packages exist for all major ballet productions, for major initiatives in The Washington School of Ballet, and for support of TWB's programs at the Town Hall Education, Arts and Recreation Campus (THEARC) in Southeast DC. For more information on sponsoring a program at TWB, please contact Michael E. Hill, Director of External Relations, at mhill@washingtomballet.org.
- **SCHOLARSHIPS** Students travel from across the globe to study at The Washington School of Ballet (TWB) but many require financial assistance to receive the world-class training provided by the TWB faculty. If you would be interested in helping a young person pursue their dream of dance, please contact Michael E. Hill, Director of External Relations, at mhill@washingtomballet.org.
- **WOMEN'S COMMITTEE** The Washington Ballet's Women's Committee advances TWB's mission by raising awareness of the Ballet's tremendous artistic contribution to the Greater Washington, DC region. The committee conducts fundraising activities to support The Washington Ballet and its Washington School of Ballet, one of the most prestigious professional training grounds in the country. The Women's Committee sponsors several exclusive events each year through its dedicated fundraising efforts, including fashion shows, embassy events, parties, and an annual wine tasting and silent auction. Membership is open to those who have demonstrated a commitment to the ballet and can contribute their time, talents, abilities and resources to help The Women's Committee efforts in support of TWB's mission. For more information, please contact Steven Kirkpatrick, Manager of Development Operations, at skirkpatrick@washingtomballet.org.
- **JETÉ SOCIETY** The Jeté Society is a group of energetic and fun young professionals aged 21-45 eager to support the ballet and have a great time. As a member, you'll enjoy unique and exclusive opportunities to network, partake in special events—including the popular beerandballet studio rehearsals and annual dance party—and feel good about raising funds to support The Washington Ballet's education programs. Membership starts at only \$50 for first time members. For more information, please contact Jessica Malcom, Assistant Director of Development, at jmalcom@washingtomballet.org.

thewashingtonballet

3515 WISCONSIN AVENUE, NW
WASHINGTON, DC 20016

Non-Profit Org.
US Postage
PAID
Washington, DC
Permit No. XXXX



SUBSCRIBE TODAY AND SAVE!
SERIES START AT JUST \$60!

LUIS R. TORRES